



hit the heights



 **Shermont**
resort

ski area

Sheregesh is a ski area in the south of Kemerovo region. It is an exceptional mountainous taiga terrain which enjoys unique microclimate. Magnificent nature, clean mountain air, abundance of snow in winter, wide slopes and long trails - Sheregesh has its particular charm! Every year the area attracts over 2 million tourists.



Kemerovo

327 KM

Novokuznetsk

161 KM

Sheregesh

hit the heights





One of the main reasons why Sheregesh is attractive to all levels from amateurs to pros is its light, fluffy snow that skiers and riders usually call “powder”. It does an excellent job making riding smooth and comfortable.

427 hectares

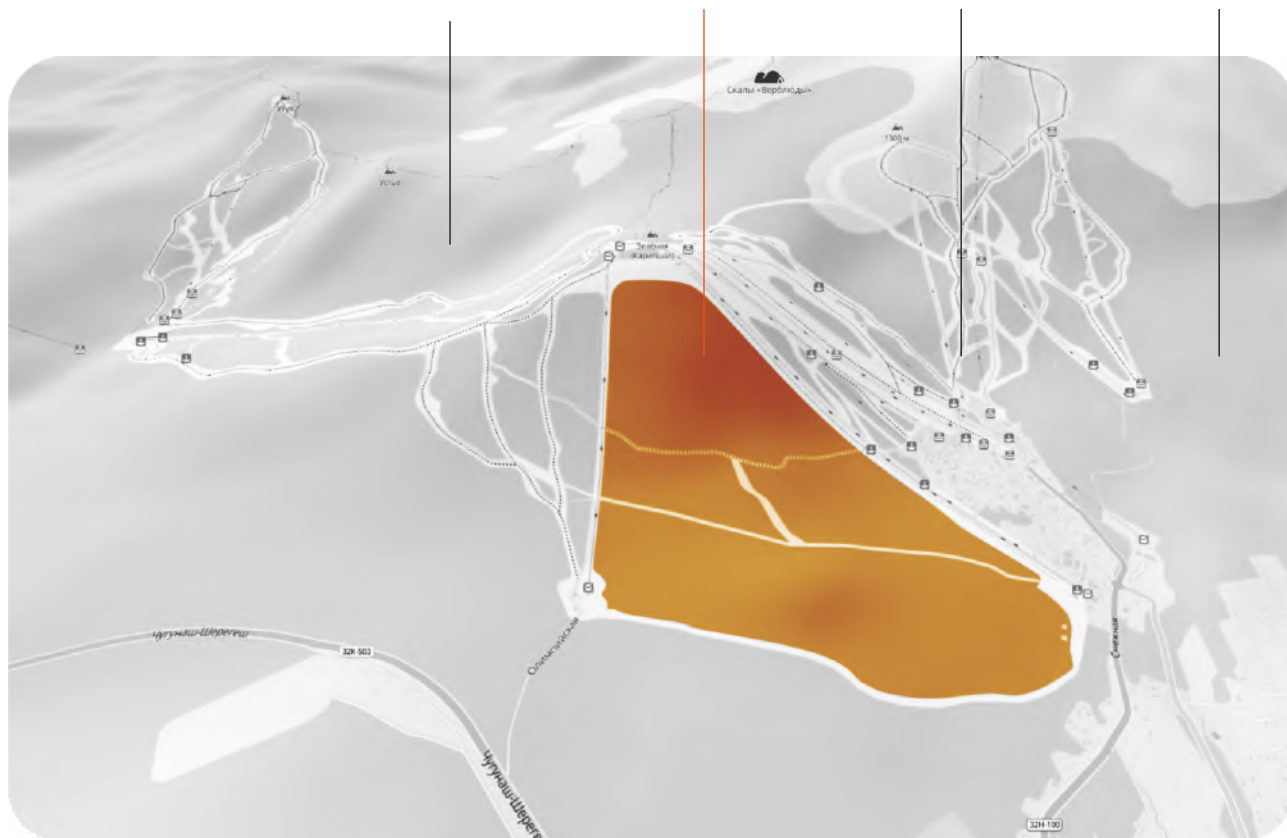
The Shermont resort extends across the valley at the foot of Mountain Zelyonaya (Green Mountain) in Sector F. The valley belongs to the Shor National Park.

sector E

sector F

sector A

sector B



about us



UMMC-Developer is the leader among Russian developers in terms of consumer qualities of residential complexes.

The goal of UMMC-Developer is to set a new quality of life by creating standards of development, responsibly treating the territories of its presence, enriching and enhancing them, while preserving history.



International award "Best For Life Design Award" - 2022
Nomination "The best apartment complex for living and investment"

5 x



*Reliable developer

2nd
in Russia

1st
in Sverdlovsk
region

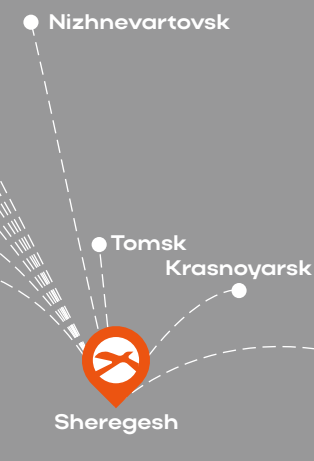


airport



By 2026, Novaport Holding intends to open a brand-new airport. The airport will be located 7 kilometers away from the Sheregesh ski area. Novaport is a leading regional airport network in CIS countries, covering 191 cities across the regions.

promising destinations



Currently the closest airports
Sheregesh village are:

- Novokuznetsk (161 km),
- Kemerovo (327 km),
- Novosibirsk (521 km)

project in figures



37

apartment buildings



7500

apartments



4

ski lifts



15 / 4

kilometers
of new trails

new trails

The project's ecosystem

Integrated approach to resort area development involves construction of a comprehensive infrastructure for comfortable living.

new lifts and ski slopes



infrastructure facilities



apartment complex



hotel complex

public spaces



landscaping
apres ski

project concept







place to stay

- 37 apartment buildings and hotels
- chalet-style houses facing the mountains



place for sports

- ski trails of various difficulties
- cross-country ski trail
- roller ski track
- safe children travellers
- sports equipment rental
- modern high speed lifts



apres ski

- thermal baths
- outdoor swimming pools
- spa and sauna area
- fitness
- entertainment zone
- terrace cafes and restaurants with karaoke
- food-court



recreation

- outdoor skating ring
- venues for festivals and fairs
- private landscaped spaces inside courtyards
- children's play area and sports grounds

project architecture

Alpine chalet's architectural design retains rustic charm, features spacious lounge terraces and modern panoramic windows offering stunning mountain views





terraces

The terraces boast a magnificent view of the snowy peaks of the Sheregesh Mountains. You will certainly be charmed by taiga magic. It's no coincidence why Shoria Mountains are called the Siberian Switzerland. The glorious beauty of picturesque Siberian nature mesmerizes and makes one fall in love with it at first sight

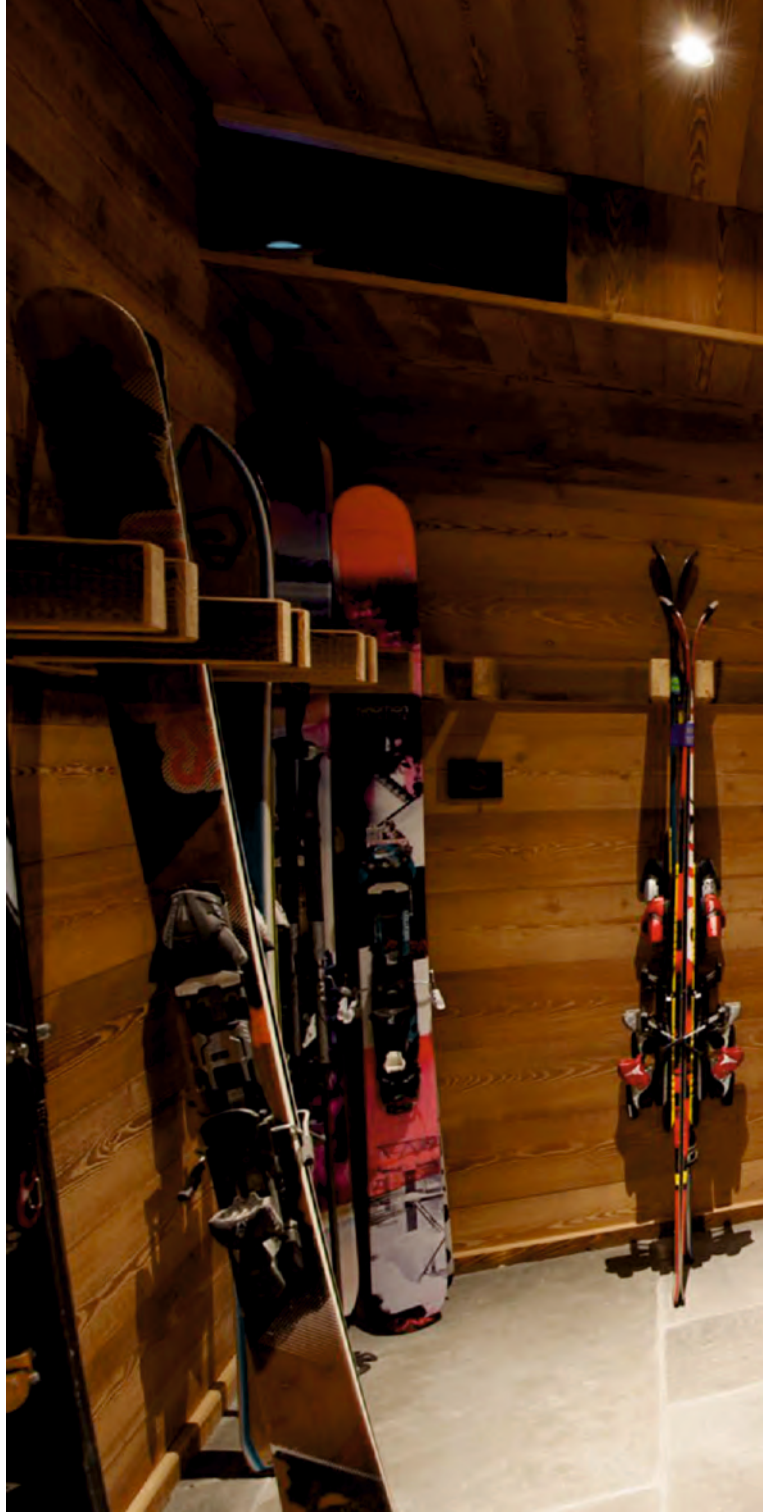




ski storage solution

ski-room is a spacious room equipped for temporary storage of ski gear and for changing. ski-room is heated and ventilated so that you can put on dry boots and warm suits in the morning

100% of apartments are equipped with individual lockers for skis and snowboards





ski-in

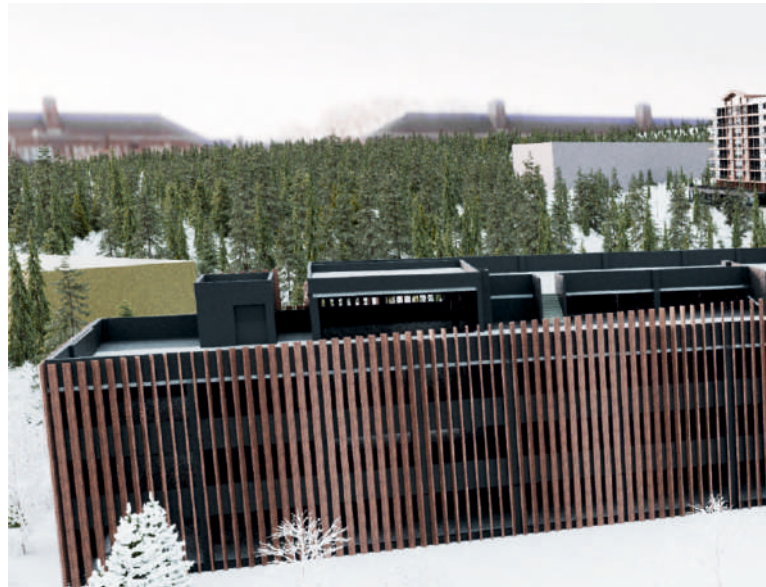
you can easily get to the hotel with your skis on



multi-storey car park

equipped with automated access system, including 24/7 monitoring and video surveillance

328
parking spaces



ski-out

There is a gondola lift right beside the hotel entrance



lobby

The main hall is designed according to the architect's original concept, featuring a cozy lounge area

The reception with concierge service provides residents with 24/7 assistance to ensure their stay is comfortable and enjoyable





standard floor plans for apartment buildings 1 & 2

- St.** - Studio apartment, 23 sq. m
- 1** - One-room apartment, 36 sq. m
- 2** - Two-room apartment, 46 sq. m
- 3** - Three-room apartment, 67 sq. m

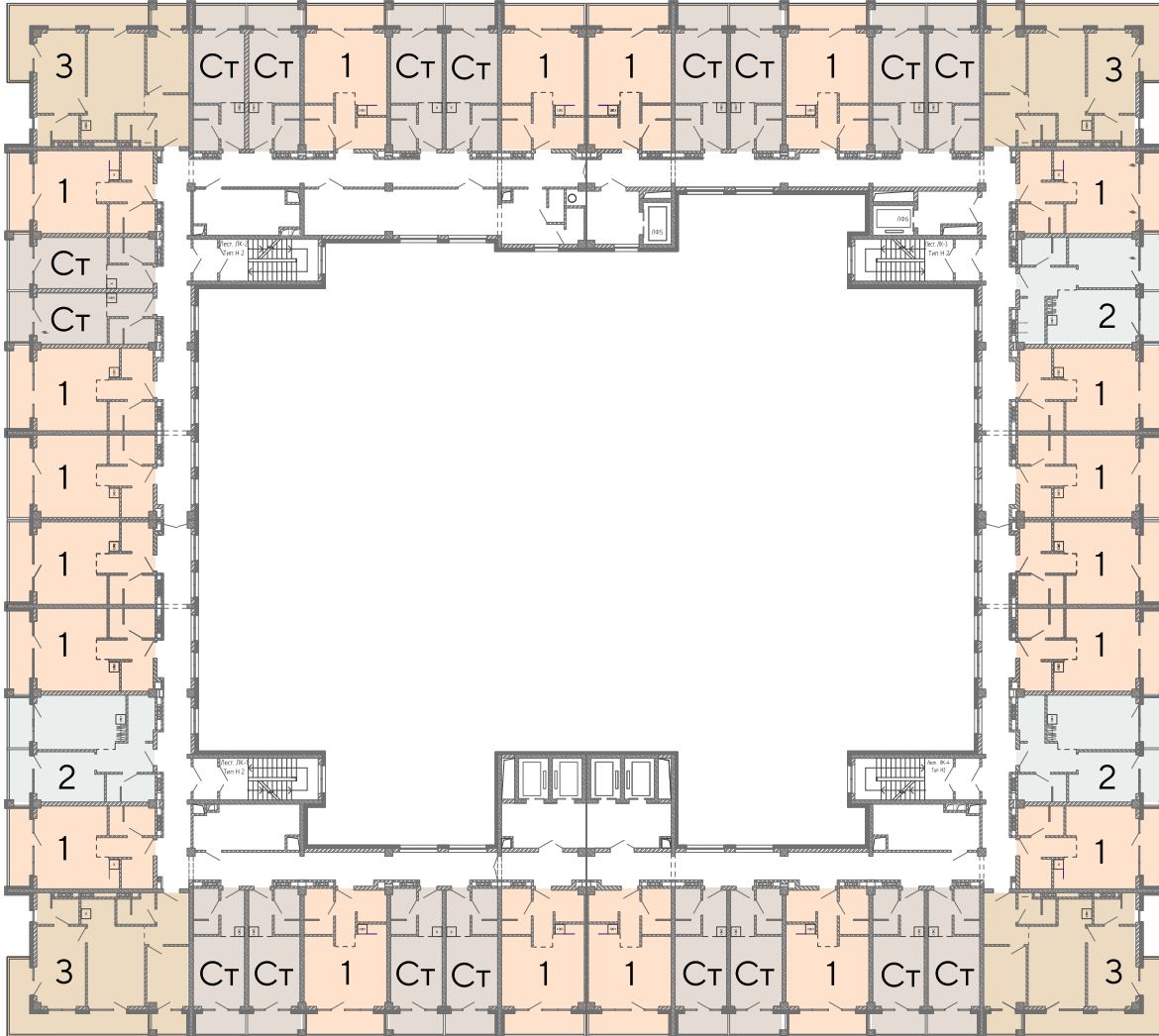
Each apartment offers picturesque views of the mountain and forest. This is one of the key features of our project.



view of the landscaped
plaza and pool area



view of the mountain and the landscaped plaza



mountain view



view of the forested area

standard floor plan for apartment building 3

- St.** - Studio apartment, 23 sq. m
- 1** - One-room apartment, 36 sq. m
- 2** - Two-room apartment, 41 sq. m
- 3** - Three-room apartment, 72 sq. m

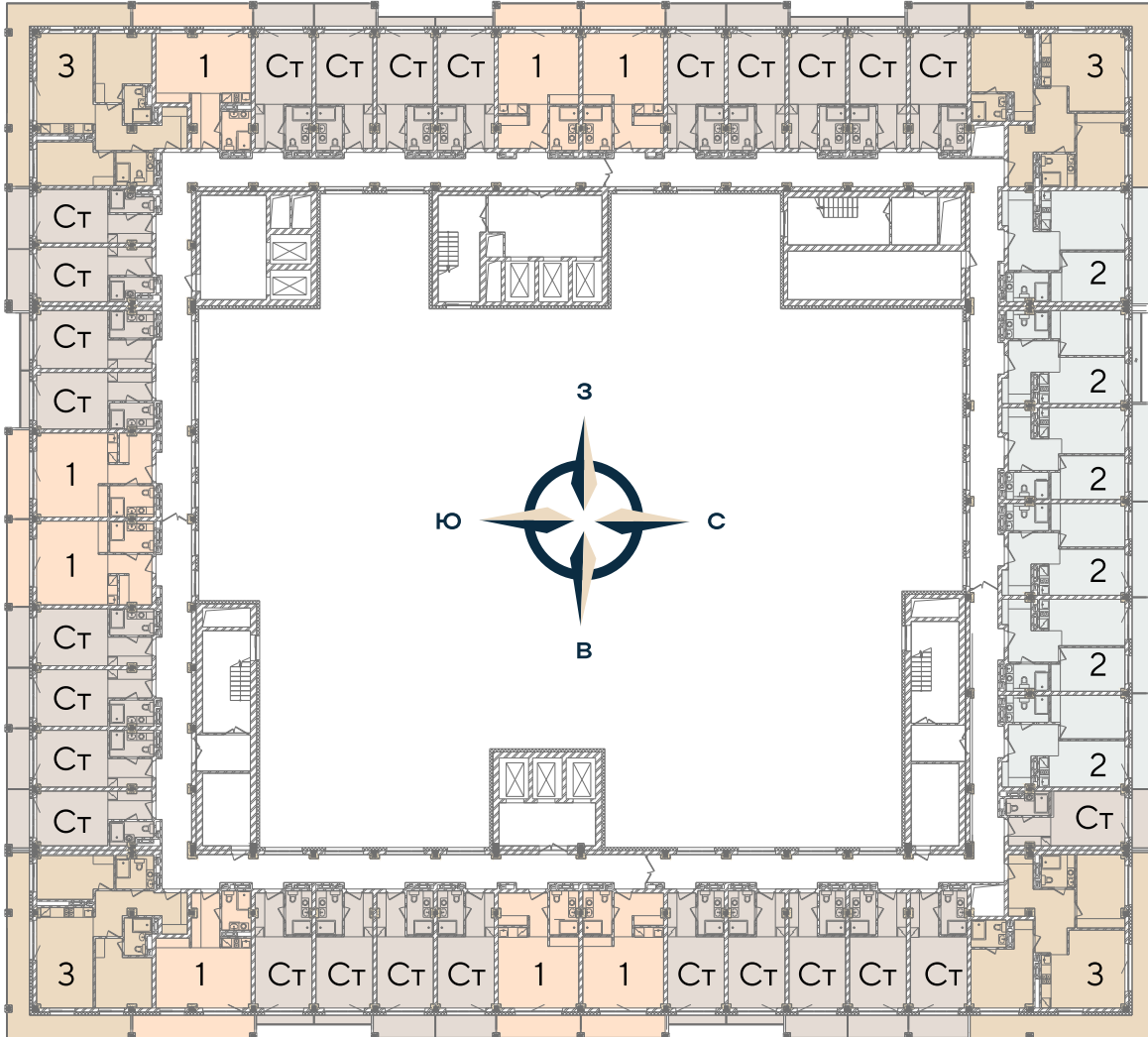
Each apartment offers picturesque views of the mountain and forest. This is one of the key features of our project.



view of the
landscaped plaza



view of the mountain and the landscaped plaza



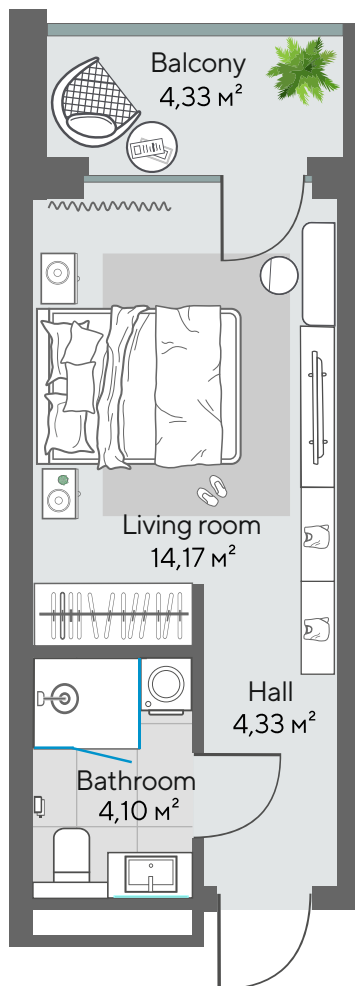
mountain view



view of the pedestrian alley

studio apartment

find the
apartment
price here



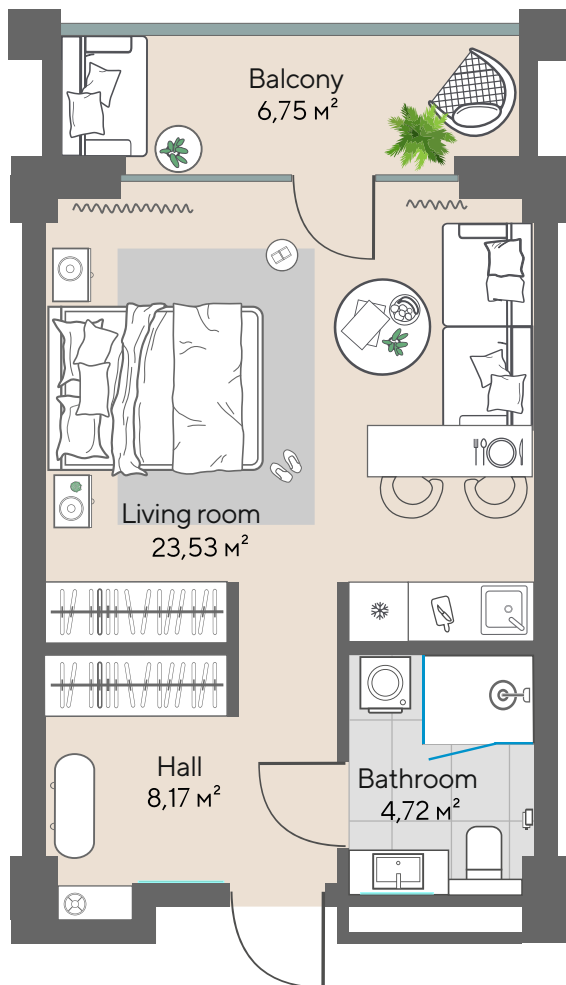
23 sq. m





one-room apartment

find the
apartment
price here



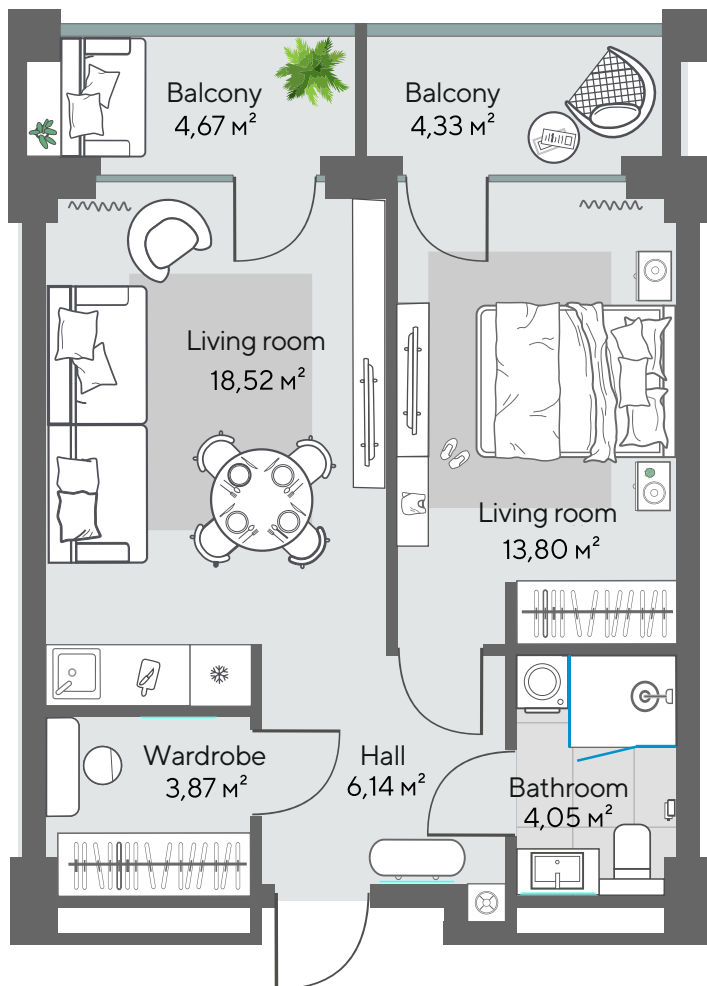
36 sq. m





Two-room apartment

find the
apartment
price here



46 sq. m

A comfortable space for
the entire family





Two-room apartment

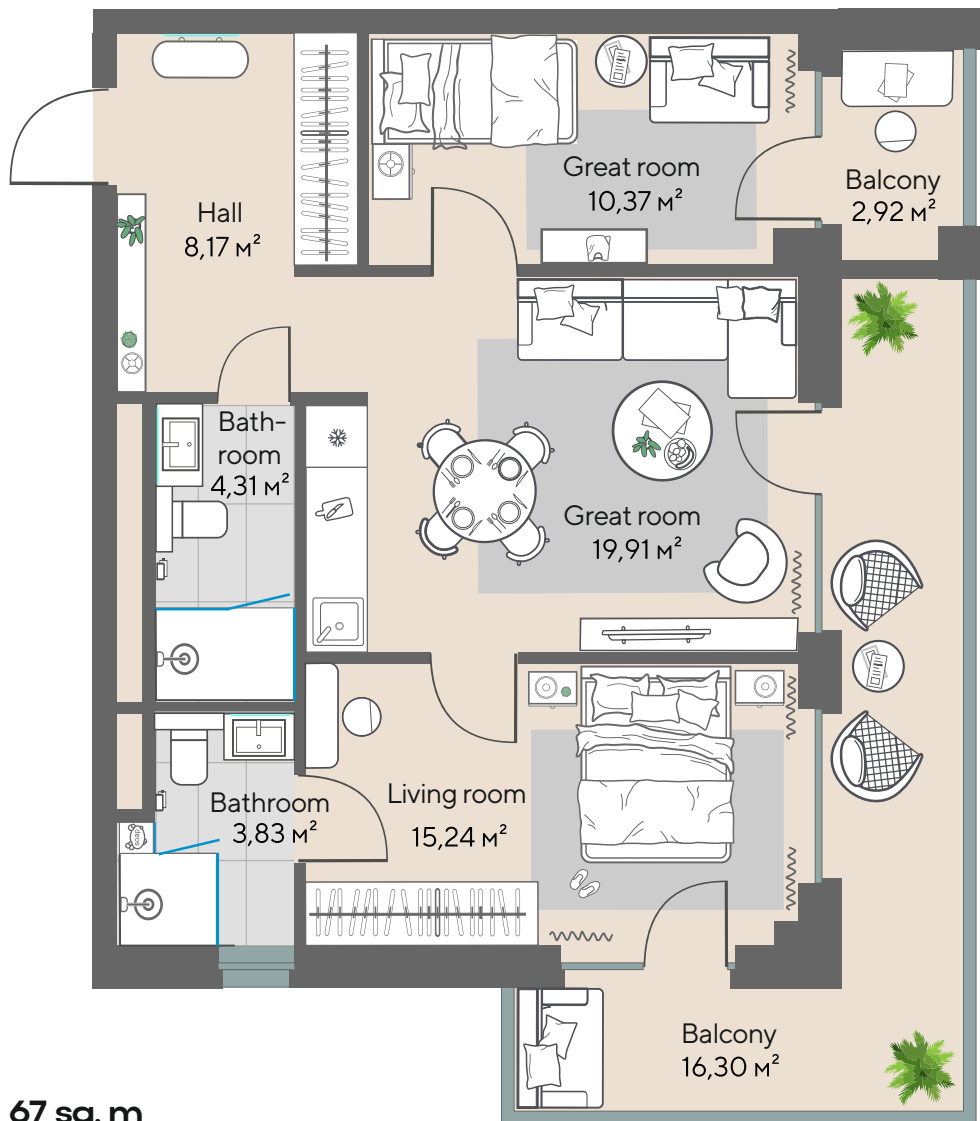
46 sq. m





Three-room apartment

find the
apartment
price here



67 sq. m





Three-room apartment



67 sq. m



Three-room apartment



67 sq. m



Three-room apartment



67 sq. m



duplex apartment

the ceiling height ranges from 3.3 m to 9 m





For investors

Owners can earn extra income without their involvement by placing their apartments in trustworthy hands of an experienced management team that will oversee all aspects of property management ensuring reliable and secure operations .





amenities and facilities





**all-season
outdoor
pool area**



fitness area



**relax & spa
area**

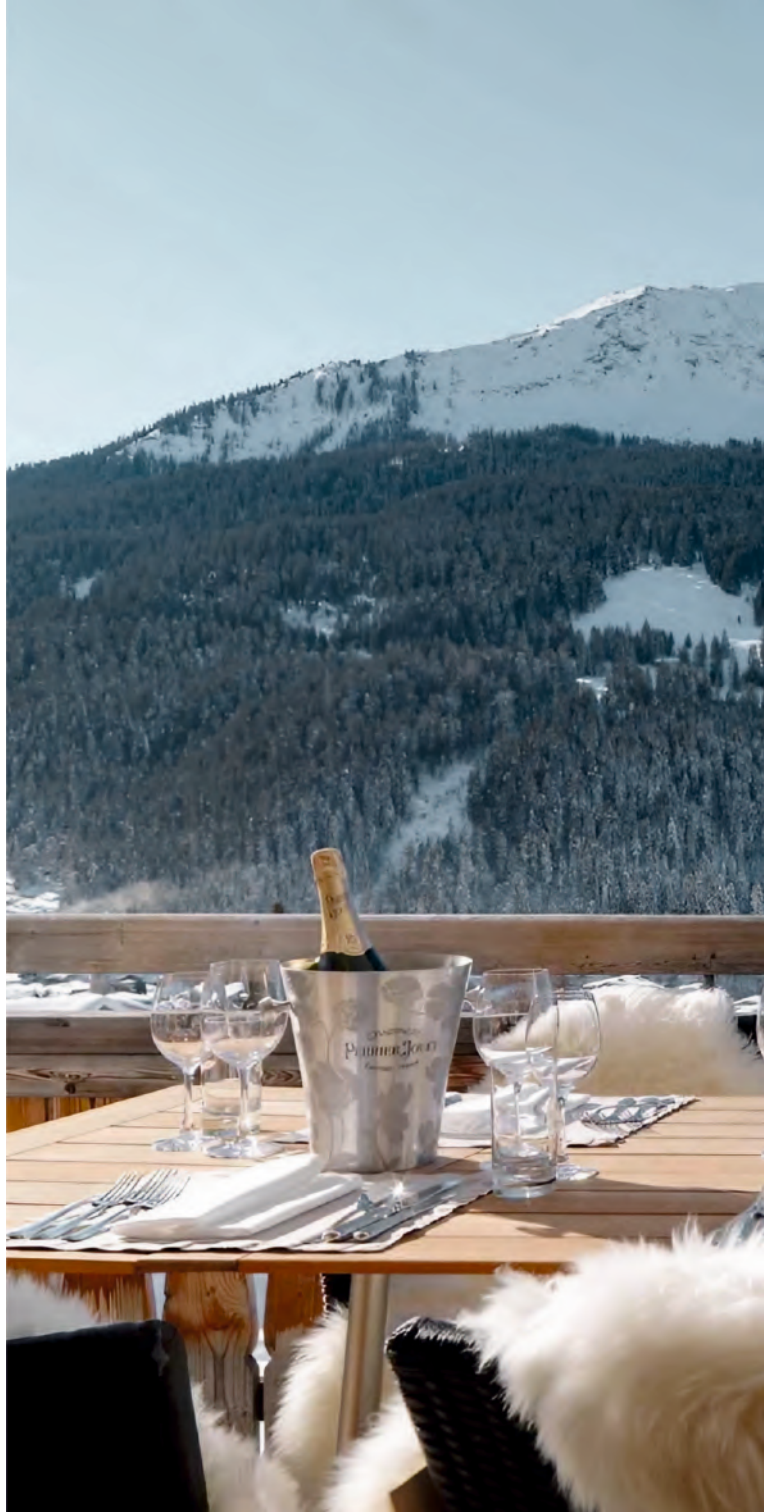


**children's
area**



**The restaurant
features a terrace
and a karaoke area**

**2500 sq. m
492 guests**





Baden-baden thermal baths

Within its lodging area, the resort will receive a Baden Family's top-notch thermal water complex with outdoor pools, relax & spa area, saunas, water park and baths.

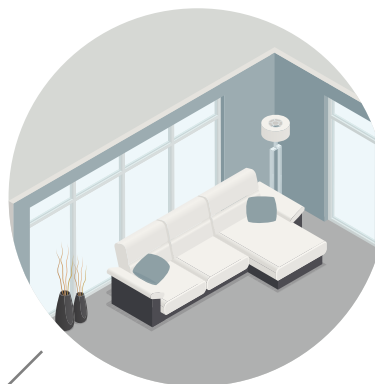
Residents of the apartment complex can unwind and relax in heated pools enjoying Shoria Mountains views.



7,3 hectares



Finishing options



furnished

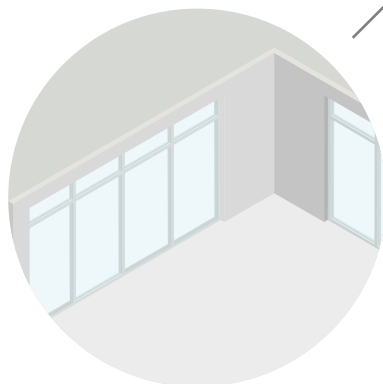
apartments are fully furnished including household appliances



fine finishing

chalet style finishing as per the developer's interior design

- wood-effect flooring
- decorative wall finish
- equipped bathroom
- interior doors
- lighting



«white box»

leveled walls and ceilings with gypsum mixtures, cement-sand floor screed with advanced noise insulation



Purchase options

You may purchase an apartment either online or in-person at the UMMC-Developer's sales office. We will reserve it and fix the price on mutually beneficial terms. Discuss with a manager which payment option would be most suitable for you: full payment or installments.

- 100% Payment

- Installment plan from UMMC-Developer:

It is the most efficient way to acquire property if you lack the full amount here and now. It is easy to purchase an apartment - you only need to make a down payment **of 30%**. A customized payment schedule will be established for the remaining amount. The installment plan is valid for apartments purchased prior to the completion of the project.

We appreciate your time and prioritize your convenience. Therefore, we will accompany you throughout the purchase process, from document preparation to signing.

Management



Having a long lasting exceptional experience in running Hyatt Regency Ekaterinburg 5*, Hyatt Place 4* and apart-hotel Iset HomeAway Residence 5*, UMMC-Developer can ensure high quality customer service



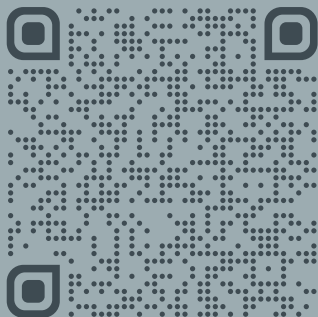
Sales centers

Yekaterinburg, Tatishcheva str., 18/1
Sheregesh Ski Resort,
Zelenaya Mountain, Vesennaya str., 60/5
8 800 550 82 72

sector B



For notes



Not a Public Offering



Sales offices:

Yekaterinburg, Tatishcheva str., 18/1

Sheregesh ski resort, Zelenaya Mountain, Vesennaya str., 60/5

8 800 550 82 72